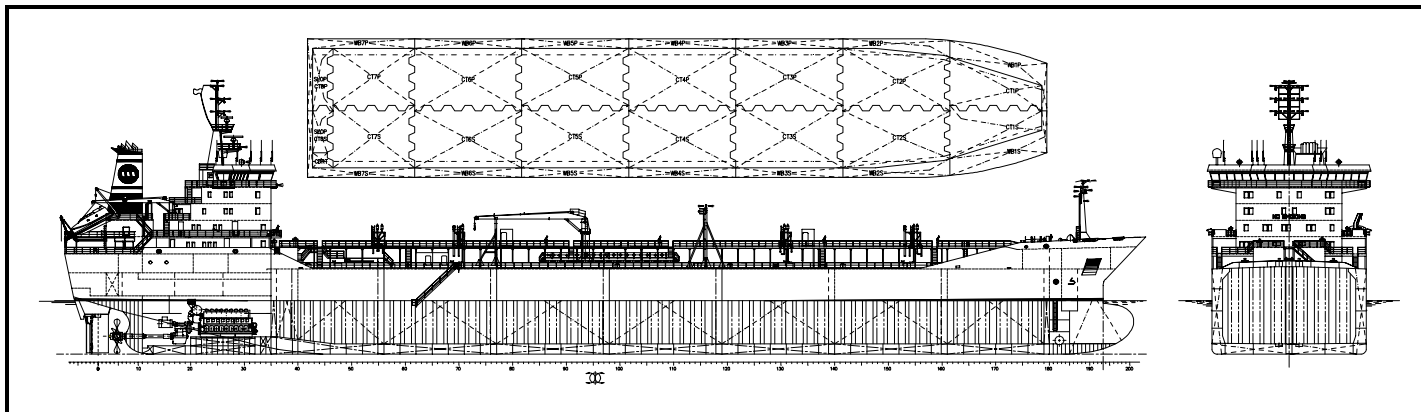
 <b>FACTORIAS VULCANO, S.A.</b>	<b>CHEMICAL &amp; OIL TANKER VESSEL- FILING CARD</b>		Nº IMO:	
	Name:	Owner / Broker:	Build. no.	Stud. no.
		<b>Augusta Due</b>	<b>491</b>	
	Cargo Capacity:	Country/ Flag:	Filing Card	Date:
	<b>25000 M3.</b>	<b>ITALY</b>		Rev.:
REFERENCE	Type:	Built date:	Page:	
<b>CBTO491 TQM</b>	<b>CHEMICAL / OIL TANKER</b>	<b>2005</b>	<b>1</b>	
		<b>IMO 2</b>		



Survey:	<b>RINA</b>	Classed:	C+Oil Tanker - Chemical Tanker ESP double hull, unrestricted navigation ship type 2* in association with a list of defined cargo list S.G. 1.54, AVM-APS,AUT-PORT,AUT-UMS,AUT-IMS,SYN-NEQ-1,CARGO CONTROL,COVENT,MANOVR,VCS-MIDSHIP, SPM,INWATERSURVEY,MON-SHAFT.GREEN STAR.FDA for 30 years of life.	Ice:	<b>1A</b>
---------	-------------	----------	---	------	-----------

MAIN PARTICULARS (m)		TONNAGES (Tons)		CAPACITIES (m3)		OUTPUT / SPEED / RANGE	
Length Overall	<b>161,12</b>	GT (IMO 69)	<b>13500</b>	Cargo Tanks	<b>24610</b>	Output (KW)	<b>8100</b>
Length B. Perp.	<b>149,80</b>	NT (IMO 69)	<b>6650</b>	Slop Tanks	<b>558</b>	% MCR - % Sea	<b>100 / 0</b>
Breadth mould.	<b>23,00</b>	DWT (d. Sum.)	<b>21600</b>	Heavy Fuel	<b>663</b>	Speed trial (KN) // Draft	<b>/ 9,63</b>
Depth mould.	<b>13,40</b>	DWT (d. Sct.)	<b>21665</b>	Diesel Oil	<b>178</b>	% MCR - % Sea	<b>85/15/400 KW.</b>
Summer draught	<b>9,63</b>	Displacement (9,65)	<b>28407,5</b>	Lub Oil	<b>49</b>	Speed serv. (KN) // Draft	<b>/ 8,4</b>
Scantling draught	<b>9,65</b>	Lightweight	<b>6743</b>	Fresh Water	<b>429</b>	Range (nm)	<b>7000</b>
Crew- Passage	<b>19</b>	TPC/I	<b>32,75</b>	Ballast Water	<b>9781</b>	Consumption t/day (F/D)	<b>30 F.O. (85%)</b>

CARGO TANK CAPACITIES (98%)						SEGREGATIONS		CARGO HANDLING			
Total (+ Slop)	Units	IMO	Cap.m3	Pres.bar	Gra.T/m3	No. segregations	<b>7+1 (slop)</b>	Pumps	Hydraulic:	Electric:	<b>X</b>
	<b>16</b>	<b>2</b>	<b>25168</b>	<b>0,2</b>	<b>1,54</b>	Cap.m3 Epoxy	<b>25168</b>	Total	<b>16</b>	<b>--</b>	<b>--</b>
	In Centre			-		Cap.m3 Zinc		D. Weel	<b>14</b>	<b>300 m3/h</b>	<b>11 bar</b>
	In Wing	<b>16</b>			-	Cap.m3 Poly		Slop	<b>2</b>	<b>150 m3/h</b>	<b>11 bar</b>
	On Deck	-	-	-	-	Cap.m3 S/Steel		Ballast	<b>2</b>	<b>500 m3/h</b>	<b>3 bar</b>
<b>SAFETY AND OTHER DETAILS</b>						<b>CARGO LIST</b>		Drain	<b>1</b>	<b>75 m3/h</b>	<b>8 bar</b>
Foam generators	<b>1</b>		<b>409</b>		<b>11</b>	1.- IMO 2 & 3		Heating system / Temperature °C		<b>THERM. OIL / 80</b>	
Tank washing mac	<b>33</b>		<b>21,5</b>	at	<b>10</b>	2.- <b>0</b>		Center hose handling crane		<b>10 t - 17 m.</b>	
Tank washing pun	<b>2</b>		<b>200</b>		<b>12</b>	3.- <b>0</b>		Aft hose handling crane		<b>2 t - 9 m.</b>	
						4.- <b>0</b>		Prvision Crane		<b>3.5 t - 12 m.</b>	

MACHINERY AND AUX. ENGINES				SPECIAL EQUIPMENT		ANOTHER EQUIPMENT		
Engine (Desing / Type)	<b>MAK</b>		<b>9M43</b>		Integrate Nav. Bridge		Iner Gas System	<b>X</b>
Output (KW) / r.p.m.	<b>8100</b>		<b>500</b>					
Gear Box (Desing / Type)	<b>RENK</b>		<b>HSUL-1200</b>		Bridge Control System	<b>X</b>	Steam Generator	
Reduction / Par	<b>4,13:1</b>				Joystick	<b>X</b>	Manifold center	<b>X</b>
Propeller (Desing / Type)	<b>KAMEWA</b>		<b>132 X F5/4</b>		Radar Type Ullage	<b>X</b>	Manifold aft	<b>X</b>
Blades Ø / r.p.m.	<b>5400</b>		<b>121</b>		Central. Cargo Operation	<b>X</b>	PTO / PTI	<b>X</b>
Bowthrustrer dia. // Kw	<b>1650</b>		<b>800</b>		Heavy Cargoes			
Aux.Dies.Eng.(Desing.-KW./Typ)	<b>(3) YANMAR 970</b>		<b>6N21 AL-EV</b>		Hazardous Cargoes	<b>X</b>		
Alternator (Desing.-KW/rpm)	<b>(3) AVK 900</b>		<b>900</b>		Bowthrustrer	<b>X</b>		
Aux.Dies.Eng.(Desing.-KW./Typ)					Antiheeling System			
Alternator (Desing.-KW/rpm)					<b>DOCUMENTACION</b>			
Shaft Alter. (Desing.-KW/rpm)	<b>(1) AVK 1350</b>		<b>1800</b>		Especificación	(Re/ Co -In/ Es)	<b>C-I/E</b>	
Harbour/Emer.(Desing.-KW./Typ)	<b>(1) CATERPILLAR - 410 Kw</b>		<b>CAT 3408</b>		Planos	(Dis/For/Mae/Hi)	<b>D/F/M/H</b>	
Alternator (Desing.-KW/rpm)	<b>(1) LEROY SOMMER - 370</b>		<b>1800</b>		Cálculos	(Cap/Est/Pot/Bal)	<b>C/E/P/B</b>	
Exhaust Boiler (Desing/KW)	<b>(1) INTEC ETA 900-40VS</b>		<b>900</b>					
Thermal oil heater (Desing/KW)	<b>(2) INTEC ET3800/40-VS</b>		<b>3800</b>					
Fecha: 25 - 11 - 98					Formato: V - 059			Revisión: 0